



NEXT GENERATION FUNDUS CAMERA



RETINA 800

PLUG AND PLAY
RETINAL IMAGING SYSTEM



RETINA 800

STREAMLINE RETINAL SCREENING IN YOUR PRACTICE

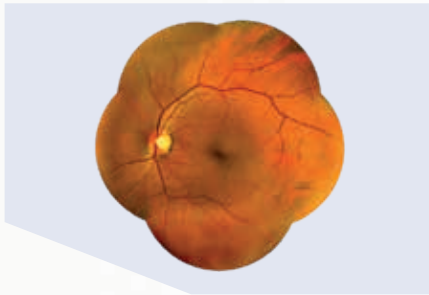
FULLY AUTOMATIC RETINAL IMAGING



Innovative and unique optical design allowing fast and high-quality image capture with minimal operator training

- **Fully automated:** uses auto focus and auto capture without human or mechanical intervention
- **Fast imaging:** captures 45° field-of-view angle images in a few seconds with the press of a button
- **Space-saving design:** compact footprint and intuitive tablet interface for easy placement in your practice's layout

EXCELLENT IMAGE QUALITY AT YOUR FINGERTIPS.



High-quality image capture even for patients with opacities or small pupils

- **Clear and true color:** Vessels, veins, arteries, crossing vessels, RNFLs, optic disc are clearly captured in true color
- **2.5mm pupil size capability:** allows superior imaging even in the presence of a cataract
- **90° Mosaic imaging made easy:** peripheral internal fixation target accessible from the tablet screen

DELEGATION-READY USER INTERFACE.



Optimize your workflow and productivity with user-friendly interface helping the patient's screening

- **Intuitive interface:** easily set up screening and validate output quality before storage.
- **Direct connection with DICOM server:** record and summarize the patient results and open the door to telemedicine.

SPECIFICATIONS

Hardware specifications:

Auto shoot and auto focus

Field of view: 45°

Mosaic field: up to 90° horizontal

Retinal resolution: 14μ

Minimum pupil size: 2.5mm

Fixation: 7 internal fixation points

Software specifications:

Red-free filter

Deep-layer filter

Automatic mosaic function

Cup-to-disc ratio

Shared folder

Compatible with [ESSIBOX.COM](https://www.essilor.com/ESSIBOX)

Tablet dimensions :

10.4 in

Dimensions:

18 in (H) x 17 in (D) x 13 in (W)

Weight:

29 lbs



45° up to 90°



2.5 mm



Fully automatic



Internal fixation points

